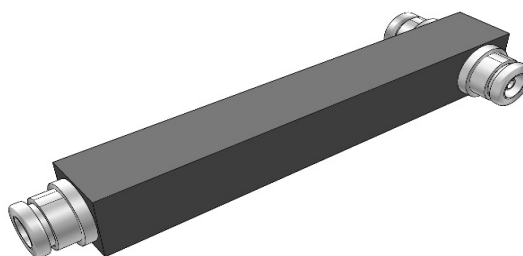


## 2 Way High Powe Splitter,700-2700MHz,NF



### Specifications

#### General Specification

|                              |   |
|------------------------------|---|
| <b>Application</b>           | Indoor/Outdoor  |
| <b>Color</b>                 | Black   |
| <b>Inner Contact Plating</b> | Silver  |
| <b>Interface</b>             | N female  |
| <b>Outer Contact Plating</b> | Tri metal   |
| <b>Housing</b>               | Passivated Aluminum or powder paint                       |
| <b>Mounting</b>              | Bracket for wall mounting included in the scope of supply |

#### Dimensions

|                            |                          |
|----------------------------|--------------------------|
| <b>Length*Width*Height</b> | 210.4 mm * 60 mm * 25 mm |
|----------------------------|--------------------------|

#### Weights

|                    |         |
|--------------------|---------|
| <b>Weight, net</b> | 0.38 kg |
|--------------------|---------|

#### Electrical Specification

|                            |                                   |
|----------------------------|-----------------------------------|
| <b>PIM, Passive IM</b>     | -150 dBc, 2x43 dBm                |
| <b>Power Rating , Max</b>  | 500 W; 3 KW Peak                  |
| <b>Input Impedance</b>     | 50 ohm                            |
| <b>Frequency Range</b>     | 700-2700 MHz                      |
| <b>VSWR, Max</b>           | 1.2                               |
| <b>Split</b>               | 2                                 |
| <b>Insertion Loss, Max</b> | 0.1 dB                            |
| <b>Split Loss</b>          | 3 dB                              |
| <b>DC capability</b>       | DC transmission between all ports |

**ALL SPECIFICATIONS ARE SUBJECT TO CHANGE WITHOUT NOTICE.**

2 Way High Powe Splitter,700-2700MHz,NF

Environmental Specification

|                                |                  |
|--------------------------------|------------------|
| Temperature Range              | -35 °C to +75 °C |
| Ingress Protection Test Method | IP65             |
| Regulatory Compliance          |                  |
| ROHS                           | Compliant        |