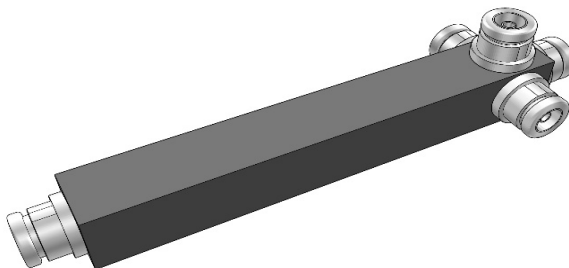


4 Way High Powe Splitter,700-2700MHz,NF



Specifications

General Specification

Application	Indoor/Outdoor
Color	Black
Inner Contact Plating	Silver
Interface	N female
Outer Contact Plating	Tri metal
Housing	Passivated Aluminum or powder paint
Mounting	Bracket for wall mounting included in the scope of supply

Dimensions

Length*Width*Height	227 mm * 60.8 mm * 25 mm
----------------------------	--------------------------

Weights

Weight, net	0.46 kg
--------------------	---------

Electrical Specification

PIM, Passive IM	-150 dBc, 2x43 dBm
Power Rating , Max	500 W; 3 KW Peak
Input Impedance	50 ohm
Frequency Range	700-2700 MHz
VSWR, Max	1.3
Split	4
Insertion Loss, Max	0.1 dB
Split Loss	6 dB
DC Capability	DC transmission between all ports

ALL SPECIFICATIONS ARE SUBJECT TO CHANGE WITHOUT NOTICE.

4 Way High Powe Splitter,700-2700MHz,NF

Environmental Specification

Temperature Range	-35 °C to +75 °C
Ingress Protection Test Method	IP65
Regulatory Compliance	
ROHS	Compliant