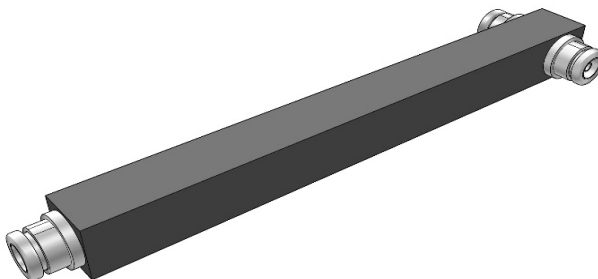


S2-038270-NF

Eternal-HJY

2 Way High Powe Splitter,380-2700MHz,NF



Specifications

General Specification

Application	Indoor/Outdoor
Color	Black
Inner Contact Plating	Silver
Interface	N female
Outer Contact Plating	Tri metal
Housing	Passivated Aluminum or powder paint
Mounting	Bracket for wall mounting included in the scope of supply

Dimensions

Length*Width*Height	283 mm * 61 mm * 25 mm
----------------------------	------------------------

Weights

Weight, net	0.53 kg
--------------------	---------

Electrical Specification

PIM, Passive IM	-150 dBc, 2x43 dBm
Power Rating , Max	300 W; 3 KW Peak
Input Impedance	50 ohm
Frequency Range	380-2700 MHz
VSWR, Max	1.25
Split	2
Dissipative Loss	0.2 dB
Split Loss	3 dB
DC Capability	DC transmission between all ports

ALL SPECIFICATIONS ARE SUBJECT TO CHANGE WITHOUT NOTICE.

2 Way High Powe Splitter,380-2700MHz,NF

Environmental Specification

Temperature Range	-35 °C to +75 °C
Ingress Protection Test Method	IP65
Regulatory Compliance	
ROHS	Compliant