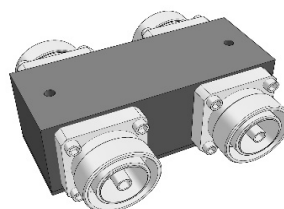


3dB Hybrid Coupler,800-960MHz,DF**Specifications**

General Specification	
Application	Indoor/Outdoor
Color	Black
Inner Contact Plating	Silver
Interface	7/16 Din female
Outer Contact Plating	Tri metal
Housing	Passivated Aluminum or powder paint
Dimensions	
Length*Width*Height	95 mm * 80.4 mm * 37 mm
Weights	
Weight, net	0.64 kg
Electrical Specification	
Power Rating , Max	200 W avg.
Impedance, nominal	50 ohm
Frequency Range	800-960 MHz
VSWR, Max	1.2, All Ports
Coupling, nominal	3 dB
Coupling Variation	± 0.3 dB
Input Isolation, Min	35 dB
Insertion Loss, Max	0.2 dB
DC Capability	DC transmission only between cross ports

3dB Hybrid Coupler,800-960MHz,DF

Environmental Specification

Temperature Range	-25 °C to +75 °C
Ingress Protection Test Method	IP65
Regulatory Compliance	
ROHS	Compliant